



ZONE ONE ARABIAN HORSE CLUB

July 2015

Volume 1, Number 6

Dates to Remember:

Zone One Show Dates

May 31 -cancelled

June 28 -cancelled

July 26

Aug 9 -double judged

Aug 30 - double judged

September 27th *

*September show will be held

In Clinton at the Reach Center *

- AHAEC DATES –
see website for dates
- Pan Am/Parapan Am Games July 10 – Aug 15

Vaccinations/Dental checks:

Have you spoken with your Veterinarian to ensure your horse is healthy and protected for the 2015 year?

UPCOMING SHOW DATES

REMEMBER: July 26 – First Show of 2015

June 28 – The Almost First Show of 2015 – Rain Out ☹

July 26th = judge Alice Draper = Laurie Tomlinson director in charge

August 9th = judges Doris Woolner and Tara Porter = Jill Kish & Rachel Straus directors in charge

August 30th = judges Laura Cross and Carolyn DeBoer with Esther and Michaela Lievre ...

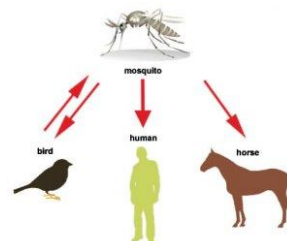
September 27th = judge Josh Schildroth with directors Helen Turner and Vicki Bruinsma

Please remember to be asking for contributions to the show....we have had great support so far and would like to be able to make this a successful year end show!

VACCINES (new vaccine information each month)

West Nile Virus

WNV is a mosquito-transmitted disease that affects humans and animals (mammals). The virus' natural life cycle involves mosquitoes and birds. The cycle starts with infected birds which can travel long distances in a short amount of time. When a mosquito bites a bird carrying the virus, the mosquito then becomes infected. This infected mosquito then feeds on another bird, a horse, human or other mammal, which then becomes infected with WNV. Incubation is roughly 5 to 15 days. Horse to horse transmission does not occur. The virus is most prevalent from May to October when mosquitoes are most abundant. Clinically a combination of symptoms can be seen; muscle twitching, depression, anxiety, sweating and facial or tongue paralysis, vertigo (balance) and stumbling issues. (AAEP guidelines suggest vaccinating every 4 months to annually)



Links:

<https://itsshowtimenj.wordpress.com/2013/02/20/horse-show-preparation/>

<http://ahaec.on.ca/on/events/>

canamequine.ca

<http://www.aaep.org/info/core-vaccination-guidelines>

www.westernfairdistrict.com/events/exhibit/2015

Directors:

Adriaan Brand-President

Jen Bigras - Treasurer

Helen Turner/Esther Lievre/Jill Kish/Rachel Straus/Lori Tomlinson/Michaela Lievre/Vicki Bruinsma

Martina Lievre/Kate Bigras/Vanessa Buechert/Emily VanBokel

Contact Us:

Facebook

<http://zoneonearabianhorseclub.weebly.com/>

2015 CLASS LIST

SHOW WILL BEGIN AT 9AM SHARP

1. Mares at halter
2. Geldings at halter
3. Senior Showmanship – 19+
4. Junior Showmanship – 14-18
5. Junior Showmanship – 13 & under
6. Leadline pleasure (walk only) – 7 & under
7. Leadline walk/jog/trot – 7 & under

TACK HOLD – 5 MIN or less

8. Leadline costume (walk only) – 7 & under
9. Walk/jog/trot pleasure – 13 & under (may not enter any canter or lope classes)
10. Walk/jog/trot equitation no pattern – 13 & under (may not enter any canter or lope classes)
11. Walk/jog/trot equitation no pattern – 14-18 (may not enter any canter or lope classes)
12. Open walk/jog/trot pleasure (may not enter any canter or lope classes)
13. Open junior horse (5 & under) + maiden horse pleasure (1st year showing under saddle anywhere)

TACK HOLD – 5 MIN or less

14. Open costume walk/jog/trot (Exhibition/Fun class only – NO POINTS)
15. Senior English pleasure – 19+
16. Junior English pleasure – 14-18
17. Junior English pleasure – 13 & under
18. Senior English equitation with pattern – 19+
19. Junior English equitation with pattern – 14-18
20. Junior English equitation with pattern – 13 & under
21. Open Arabian English pleasure
22. Open Show Hack with 10 required gaits
23. Jack Benny – 35+
24. Open Arabian Native costume – walk/canter/hand gallop
25. Trail class with jump – English or Western
26. Open Western pleasure
27. Open Arabian western pleasure

*****LUNCH BREAK WILL BE DETERMINED BY DIRECTOR IN CHARGE OF SHOW*****

*****PLEASE LET SHOW ANNOUNCER KNOW IF YOU REQUIRE A TACK HOLD BETWEEN CLASSES***** Membership yearly fee - \$20/Rider \$20/Family rate Class fees - \$5/class to a maximum of \$20 (unlimited classes)